

INTRODUCTION

What is the *FOCUS* series?

FOCUS is a mathematics-strategy practice series. Each student book in the series provides brief instruction and concentrated practice for students in one targeted Mathematics Strategy. *FOCUS* also allows students the opportunity for self-assessment of their performance. It allows teachers the opportunity to identify and assess a student's level of mastery.

Six Mathematics Strategies featured in the *FOCUS* series:

- Building Number Sense
- Using Estimation
- Using Algebra
- Using Geometry
- Determining Probability and Averages
- Interpreting Graphs and Charts

The *FOCUS* series spans eight year levels, from year one to year eight. The introductory passages in each lesson are written at or below year level, allowing students to focus on the mathematics without struggling with the reading.

Book	Reading Level
Book A	at or below year one readability
Book B	at or below year two readability
Book C	at or below year three readability
Book D	at or below year four readability
Book E	at or below year five readability
Book F	at or below year six readability
Book G	at or below year seven readability
Book H	at or below year eight readability

What is Building Number Sense, the Mathematics Strategy featured in this *FOCUS* book?

Number sense is an understanding of numbers and the relationships between them. As students build number sense, they become familiar with a variety of representations for whole numbers and parts of whole numbers.

Students learn to express numbers in a variety of forms. Three common ways to express numbers are in standard form, in word form and in expanded form. Students in the upper years learn to use exponents, in addition to the other common forms, to express numbers.

Students in years one to three develop counting skills and become familiar with ordinal numbers. They practise counting to identify numbers that come before or after another number. They also learn to use ordinal numbers to identify an item's position in a row or a list.

Students in years four to eight learn several ways to represent the parts of a whole. Students in year four are introduced to fractions. They learn to understand the parts of a fraction and to recognise the quantity represented by a fraction. Students in the upper years examine the relationship between fractions, decimals and percentages. They also learn to perform mathematical operations with fractions and decimals.

Students in year eight are introduced to prime and composite numbers, and they learn to determine a number's prime factorisation. They also practise following the order of operations when solving problems with parentheses, exponents or square roots.

How should I use the **FOCUS** series in the classroom?

The **FOCUS** series can be used effectively in the classroom in several ways. Here is a suggestion for using the program in **whole class, large group, small group, paired** and **individual** formats.

To the Student

(inside front cover of the student book)

Read and discuss this with the whole class or large group to make sure students understand what they are to do in the book.

Learn About

(pages 2–3 of the student book)

Read the two pages of instruction in the Mathematics Strategy to the whole class or large group. Model using the Mathematics Strategy. Use information from the Mathematics Strategy Tips for the Teacher on pages 12–13 of this teacher guide to prompt additional in-depth discussion of the Mathematics Strategy, as appropriate. Make sure all students understand the features of the Mathematics Strategy and how to apply the Mathematics Strategy before they go on. The Learn About requires approximately 45 minutes.

Lesson Preview

(pages 4–5 of the student book)

Read the boxed directions to the whole class or large group. Emphasise what students should watch for as they read the problem. Have students read the problem individually. Guide the whole class or large group in answering the two selected-response questions. Then discuss why each answer choice is correct or not correct. Make sure all students understand how to answer the Mathematics Strategy questions before they go on. The Lesson Preview requires approximately 45 minutes.

Lessons

(pages 6–45 of the student book)

For each lesson, have students read the directions and the passage individually, in pairs or in small groups. Have students answer the selected-response questions and the constructed-response question individually, in pairs or in small groups.

Have students use the Tracking Chart on page 47 of the student book to note the date that they have finished each lesson. When the questions in all five lessons in a group have been corrected, have students note the number of correct responses for each lesson and then the number of correct responses for the whole group of lessons.

Each lesson, plus tracking, requires approximately 45 minutes. Allow students 30 minutes to read the passage and answer the questions, and allow 15 minutes to discuss the responses. Discuss the answers to the questions with the whole class or large group, or with pairs, small groups or individuals. (See **What is the correction procedure?** on page 4 of this teacher guide.)

Self-Assessment: When students have finished each group of five lessons, have them complete the appropriate Self-Assessment. When students have finished all twenty lessons, have them complete Self-Assessment 5. Each Self-Assessment requires approximately 20 minutes.

Discussion: When students have finished each group of five lessons, discuss their performance individually or in small groups. When students have finished all twenty lessons, discuss their performance individually or in small groups. Each discussion requires approximately 25 minutes.

MATHEMATICS STRATEGY TIPS FOR THE TEACHER

Numbers are used to count, to show order and to identify how many.

Whole numbers have one or more digits, and each digit has a specific place value. Students at this level identify numbers with up to four digits and learn to describe the value of digits in the ones, tens, hundreds and thousands places.

Introduce students to the standard form and word form of numbers by saying a number, such as *thirty-seven*, and asking a volunteer to write the number in standard form on the board or on a sheet of paper. Then write three- and four-digit numbers in standard form on the board, and ask students to read the numbers aloud.

Next, write a list of three- and four-digit numbers in standard form in a column on the board. In a second column, write the same numbers in word form in a different order. Then ask volunteers to draw lines to match the standard form and word form of the numbers. Challenge students by writing three- and four-digit numbers in standard form on the board and asking volunteers to write the numbers in word form.

Write a list of three-digit numbers on the board. Ask volunteers to identify the value of the hundreds, tens and ones digits in each number. Then draw a place-value chart on the board that includes the thousands place. Write a four-digit number in the chart, placing each digit in its own place-value column. Have students identify the number and the value of each digit.

Learn About

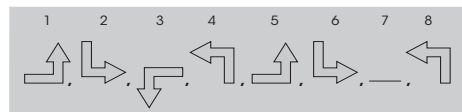
Using Algebra: Patterns

Some **patterns** use shapes or figures. These patterns follow **rules**. The **rule** is used to change each figure to the next figure. A line represents a missing figure in the pattern.


To find the rule, look at a series of figures. Ask these questions:

- What was done to the first figure to get the second figure?
- Is the same thing done to the second figure to get the third figure?
- Is this true for the rest of the figures in the pattern?

Look at the pattern. Try to find the rule.



Find the rule. The figures appear in order. From the first to second figure, the shape makes a $\frac{1}{4}$ turn. The first arrow points up and the second points right. The pattern of the arrow is up, right, down, left. The order repeats starting with the fifth figure in the pattern.

The missing figure is .



Some **patterns** use shapes or figures. These patterns follow **rules**. The **rule** is used to change from each figure to the next figure. A line can represent a missing figure in the pattern.

2

Using Algebra Book C CAS992X © 2009 Hawker Brownlow Education

Begin a study of expanded form by writing the expression $3000 + 500 + 20 + 7$ on the board. Then draw students' attention to the place-value chart on the Learn About page. Explain that the first step to writing a number in expanded form is identifying the place value of each digit in the number. Point out that the 3 in the place-value chart is in the thousands place. Explain that the number 3000 in the expression on the board represents the value of the 3. Continue this explanation with the 5, 2 and 7. Challenge students by having them write the number 2741 in expanded form. ($2000 + 700 + 40 + 1$)

How Is *FOCUS on Mathematics* Supported by Research?

FOCUS on Mathematics is supported by research from mathematical researchers and organisations, including the National Math Advisory Panel and National Council of Teachers of Mathematics, both from the US. Much of the research on effective instruction for mathematical students parallels the recommendations of the NMAP (2008). Many of these recommendations are integrated into the *FOCUS on Mathematics* series, including: word-problem focus, explicit instruction with modelling and focused practice.

Word-Problem Focus

Word problems are the proving ground for students to demonstrate their mastery of mathematical fluency and conceptual understanding. Having the ability to transfer what they have learned to new problem-solving situations is one of the major goals for mathematical education (NCTM, 2006; NMAP, 2008). “The issue of transfer, that is, the ability to use skills learned to solve one class of problems, such as similar triangles, to solve another class of problems, such as linear algebra, is a vital part of mathematics learning” (NMAP, 2008, p. 30). And yet, students, on average, have the most difficulty solving word problems.

The *FOCUS on Mathematics* series provides repeated and focused practice of key maths strategies in the context of word problems. With more than 800 word problems in the series, students gain multiple opportunities to practise core maths concepts and strategies.

Explicit Instruction with Modelling

Explicit instruction is a hallmark of effective instruction for struggling and on-level students. Explicit instruction is one of the instructional methods that research has proved to be effective. “By the term *explicit instruction*, it is meant that teachers provide clear models for solving a problem type using an array of examples, that students receive extensive practice in use of newly learned strategies and skills, that students are provided with opportunities to think aloud (i.e. talk through the decisions they make and the steps they take), and that students are provided with extensive feedback” (NMAP, 2008, p. 23). Each of these features, can be found in the *FOCUS on Mathematics* series. With explicit instruction and teacher modelling, skill efficiency is nearly guaranteed by students (Hiebert & Grouws, 2008).

FOCUS on Mathematics uses explicit instruction in the teaching of the mathematical strategies. The explicit instruction occurs in the Learn About section and the Lesson Preview section. Through the Learn About section, students receive explicit instruction consisting of a definition, semi-concrete and visual representations of the maths concepts, and a usage rule for the maths strategy. Additionally, *FOCUS on Mathematics* is a perfect vehicle for struggling students because it does not overwhelm students with the presentation of information. In the Learn About lesson, students initially experience the maths concepts in short presentations, usually three to seven sentences long. A Remember box text feature is a point of reference for students to use while attending to lessons. The Remember box is consistently placed in each book of the series. Struggling or novice maths students usually skip or gloss over text features, which are valuable tools. With repeated exposure and external prompting by the teacher, students learn to pay attention to the text feature.

Focused Practice

One of the major callings from from expert panels and organisations is for deeper learning and practice of mathematical skills and strategies. Focusing on specific key mathematical topics allows “teachers to commit more time each year to topics receiving special emphasis. At the same time, students would have opportunities to explore these topics in depth, in the context of related content and connected applications, thus developing more robust mathematical understandings” (NCTM, 2006, p. 4).

ANSWER KEY

FOCUS on Building Number Sense, Book C

Lesson 1 (page 6)

1. B 2. C 3. D 4. C

5. Solution: The number 2435 written in expanded form is $2000 + 400 + 30 + 5$.

Sample Explanation: *First, I multiplied each digit by its corresponding place value.*

$$2 \times 1000 = 2000$$

$$4 \times 100 = 400$$

$$3 \times 10 = 30$$

$$5 \times 1 = 5$$

Then I wrote 2435 in expanded form.

$$2000 + 400 + 30 + 5$$

Lesson 2 (page 8)

1. C 2. B 3. D 4. A

5. Solution: The number 67 written in expanded form is $60 + 7$.

Sample Explanation: *First, I multiplied each digit by its corresponding place value.*

$$6 \times 10 = 60$$

$$7 \times 1 = 7$$

Then I wrote 67 in expanded form.

$$60 + 7$$

Lesson 3 (page 10)

1. B 2. C 3. A 4. C

5. Solution: The number that comes just after three hundred and fifty-three and just before three hundred and fifty-five is three hundred and fifty-four.

Sample Explanation: *I counted on from 353 to 355.*

Lesson 4 (page 12)

1. A 2. B 3. D 4. D

5. Solution: The number 253 written in expanded form is $200 + 50 + 3$.

Sample Explanation: *First, I multiplied each digit by its corresponding place value.*

$$2 \times 100 = 200$$

$$5 \times 10 = 50$$

$$3 \times 1 = 3$$

Then I wrote 253 in expanded form.

$$200 + 50 + 3$$

Lesson 5 (page 14)

1. D 2. D 3. B 4. C

5. Solution: The number 37 comes just after 36 and just before 38.

Sample Explanation: *I counted on from 36 to 38.*

Lesson 6 (page 16)

1. B 2. B 3. B 4. D

5. Solution: The number 1324 written in expanded form is $1000 + 300 + 20 + 4$.

Sample Explanation: *First, I multiplied each digit by its corresponding place value.*

$$1 \times 1000 = 1000$$

$$3 \times 100 = 300$$

$$2 \times 10 = 20$$

$$4 \times 1 = 4$$

Then I wrote 1324 in expanded form.

$$1000 + 300 + 20 + 4$$

Lesson 7 (page 18)

1. C 2. C 3. B 4. B

5. Solution: The number 300 is an even number.

Sample Explanation: *The digit in the ones place is 0. Therefore, the number 300 is even.*