

# TABLE OF CONTENTS

<b>CLASS CLOTHES - DAY 1</b> Prediction .....	3	<b>ANOTHER SPINNER</b> Probability .....	24
<b>CLASS CLOTHES - DAY 2</b> Graphing .....	4	<b>GRAPHING CAME</b> Graphing .....	25
<b>RED AND BLACK ANTS</b> Prediction .....	5	<b>ADD AND GRAPH</b> Graphing .....	26
<b>RED AND BLACK ANTS (CONT.)</b> Displaying Data .....	6	<b>ANOTHER GRAPHING CAME!</b> Graphing .....	27
<b>POPPING POPCORN</b> Prediction .....	7	<b>MAKE YOUR MIND SPIN</b> Probability .....	28
<b>POPPING POPCORN (CONT.)</b> Displaying Data .....	8	<b>EXPLAIN THIS, PLEASE</b> Interpreting Data .....	29
<b>PROBABILITY WITH BEADS</b> Prediction/Probability .....	9	<b>GRAPHING SPINS</b> Graphing .....	30
<b>HEARTS AND DIAMONDS</b> Prediction/Probability .....	10	<b>I PREFER PINK</b> Surveying/Graphing .....	31
<b>JELLYBEAN JUMBLE</b> Probability .....	11	<b>SPAGHETTI OR PIZZA?</b> Surveying/Graphing .....	32
<b>MY FAVOURITE PET</b> Collecting Data .....	12	<b>SPORTS DATA</b> Interpreting Data .....	33
<b>MY FAVOURITE PET (CONT.)</b> Displaying Data .....	13	<b>THE ONLY WAY TO TRAVEL</b> Graphing .....	34
<b>MUNCH AND CRUNCH</b> Collecting Data ..	14	<b>RUN AND GRAPH IT!</b> Graphing .....	35
<b>MUNCH AND CRUNCH (CONT.)</b> Displaying Data .....	15	<b>AVERAGE AWAY</b> Finding the Average (the Mean) .....	36
<b>SUNNY SKIES</b> Pictographs .....	16	<b>THE MEAN!</b> Finding the Average (the Mean) .....	37
<b>YOUR BACKYARD</b> Interpreting Data .....	17	<b>MORE MEAN!</b> Finding the Average (the Mean) .....	38
<b>TAKE A SPIN</b> Chance (Probability) .....	18	<b>ABOVE AVERAGE ANSWERS</b> Finding the Average (the Mean) .....	39
<b>INSECT INFORMATION</b> Probability .....	19	<b>AROUND TOWN</b> Coordinate Graphing .....	40
<b>SPINNER FUN</b> Collecting Data .....	20	<b>TERRIFIC TRANSPORTATION</b> Coordinate Graphing .....	41
<b>SPINNER FUN (PREDICTIONS)</b> Prediction .....	21	<b>DINOSAUR DISCOVERY</b> Ordered Pairs ..	42
<b>SPINNER FUN (TALLY SHEET)</b> Displaying Data .....	22	<b>LETS GO, TEAM!</b> Ordered Pairs .....	43
<b>SPINNER FUN (COMPARISON SHEET)</b> Predicting/Comparing Data .....	23	<b>A WALK IN THE ZOO</b> Ordered Pairs .....	44
		<b>SPACE TRAVEL</b> Ordered Pairs .....	45

## Credits

Author: Tina Szmadzinski  
 Illustrations: Don Ellens  
 Cover Art: Annette Hollister-Papp  
 Project Director/Editor:  
 Rhonda DeWaard  
 Editors: Alyson Kiedo  
 & Sharon Kirkwood  
 Production: Pat Geasler

Originally published by Instructional Fair, Inc.  
 Republished in Australia by Hawker Brownlow Education

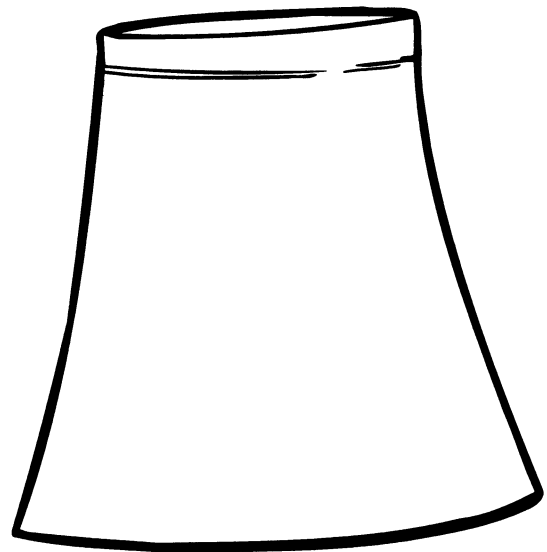
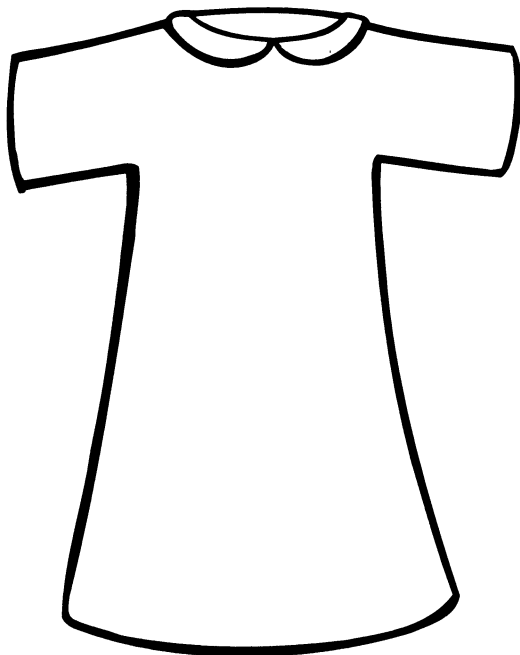
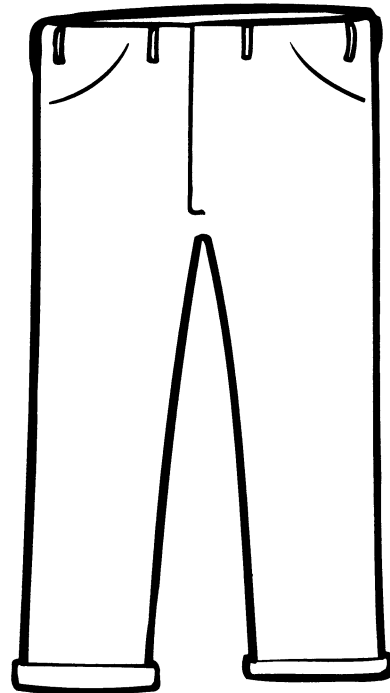
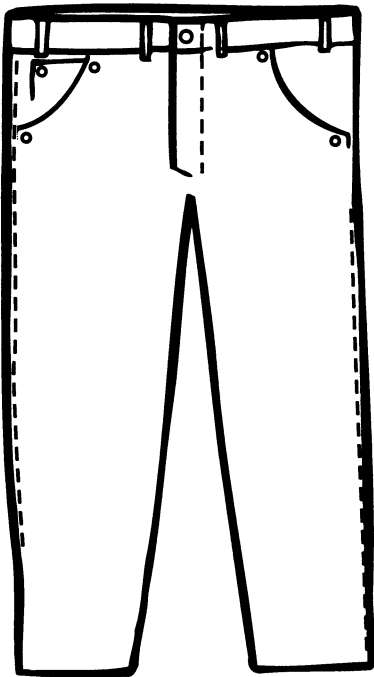
ISBN 174025 109 1  
 Code #IFA-5118

© 2000 Hawker Brownlow Education. All rights reserved.  
 Printed in Australia

The classroom teacher may reproduce copies of materials in this book for classroom use only. The reproduction of any part for an entire school system is entirely prohibited. No part of this publication may be transmitted, stored or recorded in any form without written permission from the publisher.

# CLASS CLOTHES – DAY 1

Look around to see what your classmates are wearing today. Are they wearing jeans, other pants, dresses or skirts? Make predictions about what you think they will wear tomorrow. Write a number inside each article of clothing showing your prediction.



# CLASS CLOTHES - DAY 2

Count the number of students wearing each type of clothing. Colour in that same number of circles in the correct column. Compare these numbers with the predictions you made yesterday.

## Clothes Our Class Wore Today

12	12	12	12
11	11	11	11
10	10	10	10
9	9	9	9
8	8	8	8
7	7	7	7
6	6	6	6
5	5	5	5
4	4	4	4
3	3	3	3
2	2	2	2
1	1	1	1

Jeans

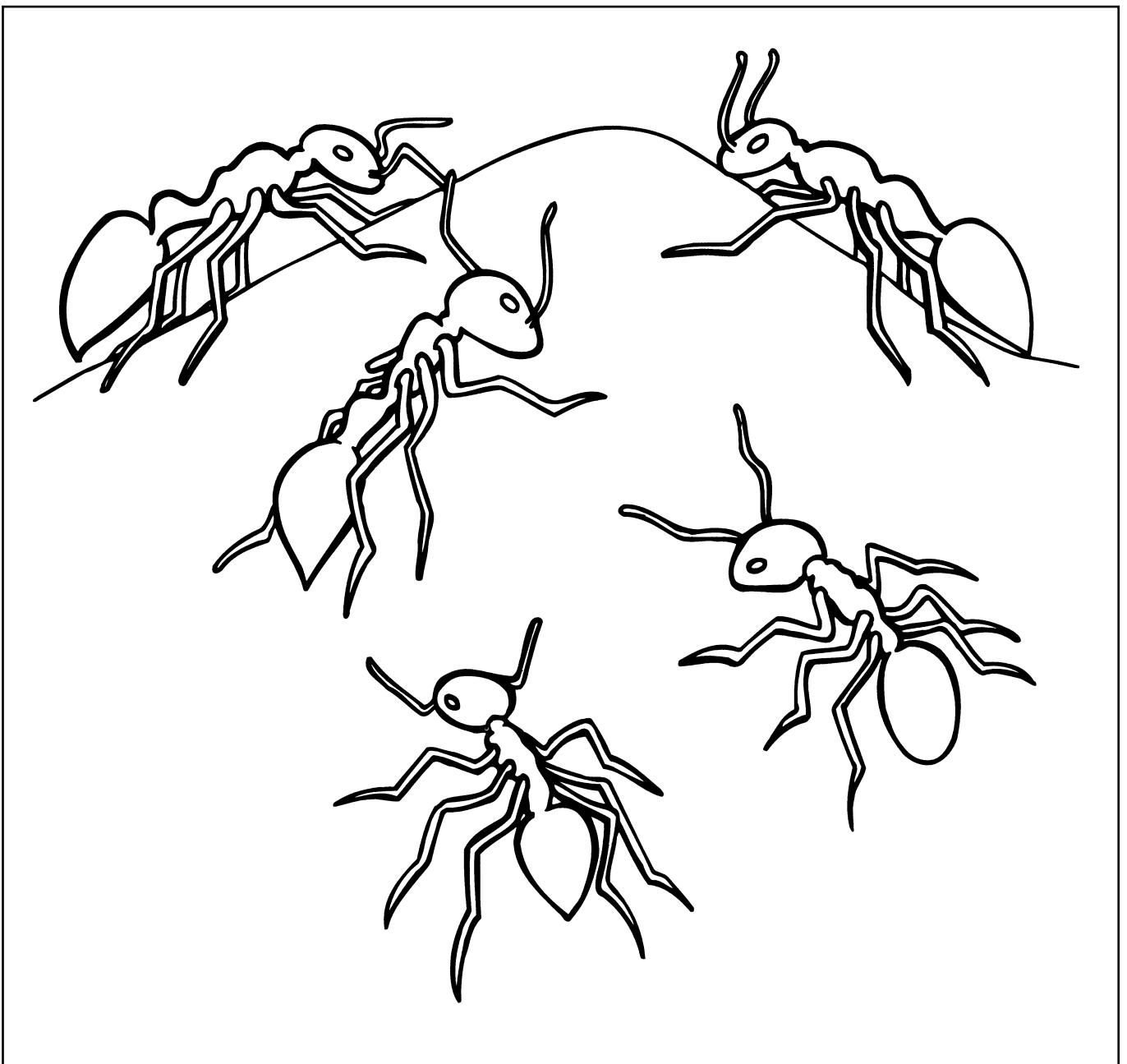
Other Pants

Dresses

Skirts

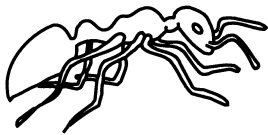
## RED AND BLACK ANTS

There are five ants on this anthill. Some are red ants and some are black ants. Colour to show how many you think are black ants. Colour to show how many you think are red ants.

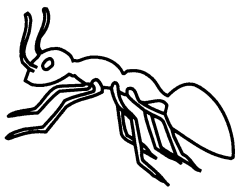
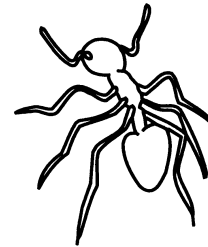


## RED AND BLACK ANTS (CONTINUED)

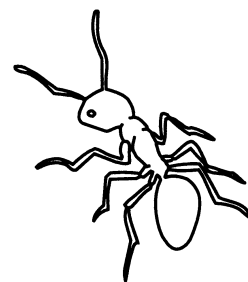
Teacher Note: Cut out these headings and display on the left side of the display board or floor graph. Have each student place his/her ant picture after the correct heading. Discuss the guesses the students made.



**More Red  
Than Black**

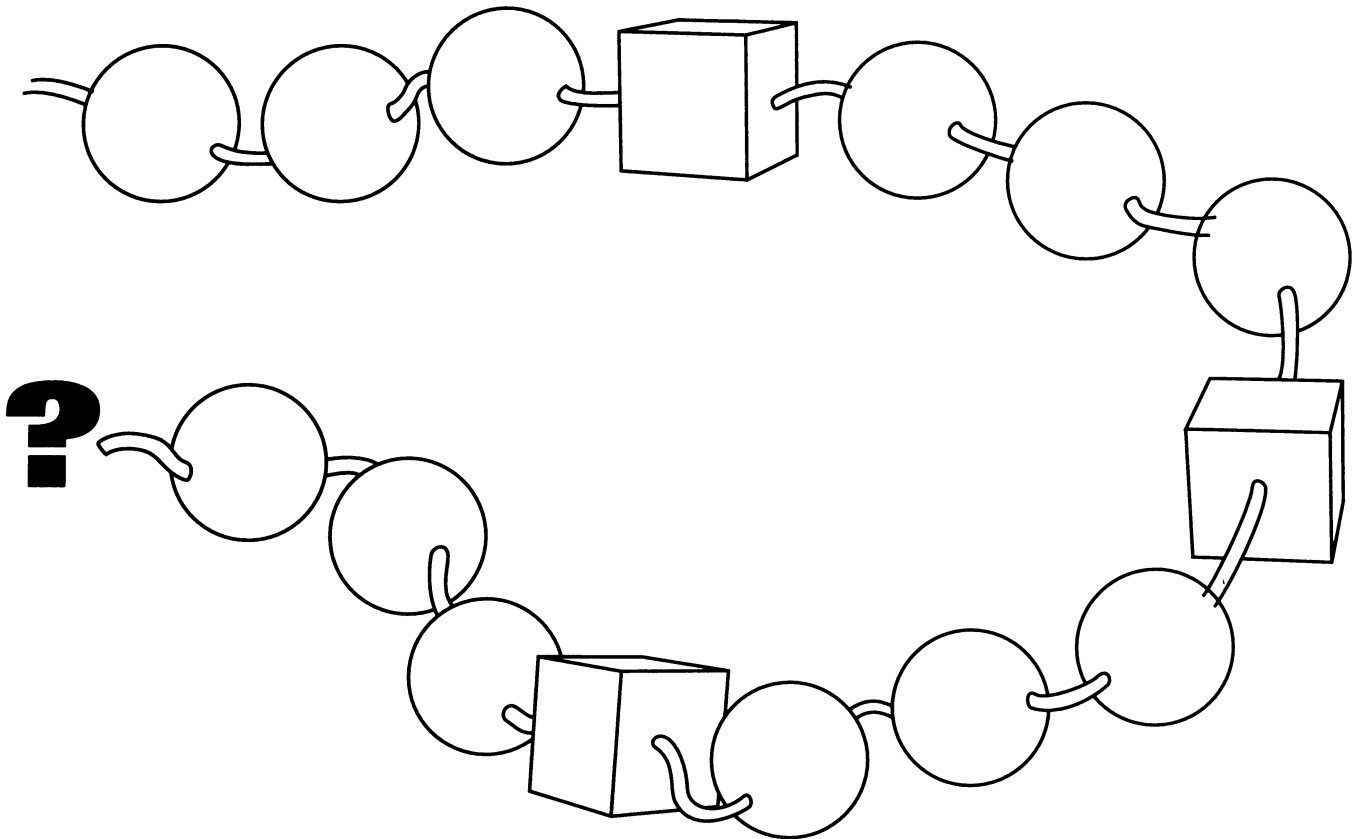


**More Black  
Than Red**



# PROBABILITY WITH BEADS

Colour the square beads one colour and the round beads another colour. Then answer the questions below.



1. Look for the question mark (?) above. Which bead do you think should be in this spot? \_\_\_\_\_

Why? \_\_\_\_\_

\_\_\_\_\_

2. If the beads were mixed together in a bag and you reached in and pulled one out, which shape bead do you think it would be?

Why? \_\_\_\_\_

\_\_\_\_\_