

Fraction

Manipulatives Distribution and Assembly

Congratulations on your purchase of the Fraction Manipulatives®. This set contains materials for nine teams of four.

Laurie Robertson has written a book, *Fraction Fun through Cooperative Learning*, which was written specifically to give you, the teacher, lessons to use with the Fraction Manipulatives. When these manipulatives are used with the suggested structures, explorations, and lessons contained in *Fraction Fun*, teaching fractions through cooperative learning will be easy for you, the teacher, and exciting for your students. *Fraction Fun* is available from *Hawker Brownlow Education*.

Preparation:

You may use these manipulatives as is. To make them more durable and attractive, laminate all of the materials before distributing them to students.

Distribution:

First, divide the manipulatives between all of the teams in your classroom. Each team should receive one set of manipulatives. A set includes the following: 1 Fraction Spinners page with two metal arrows and two brads, 1 Symbolic Die and 1 Concrete Die, and 10 different coloured fraction sheets.

Storage:

When all the manipulatives are cut out, students can store their own pieces in their own envelope or zip-lock bag. These can then be stored in a team tub or shoe box.

Assembly:

Fraction Spinners

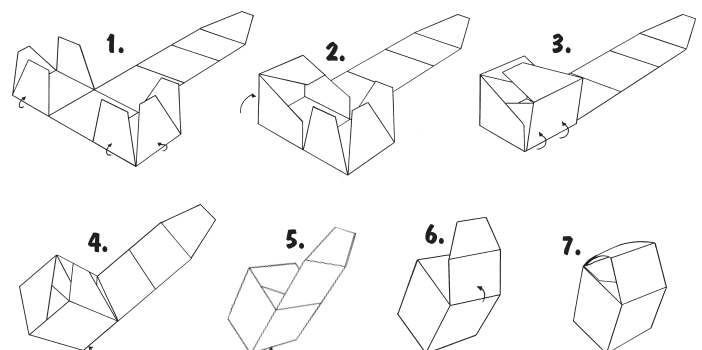
Each team cuts out the two spinners along the dotted lines and uses the small brads to fasten the metal arrows to the spinners.

Fraction Sheets

The teammates cut each of the 10 sheets along the lines into four fraction manipulatives. Each student gets 1 fraction manipulative of each colour. Next, each student cuts apart each of their manipulatives, along the black lines, into the correct number of pieces. Students end up with one 1, two $\frac{1}{2}$'s, three $\frac{1}{3}$'s, and so on. When they have finished cutting out all of the pieces, they can store the pieces in an envelope or zip-lock bag.

Concrete and Symbolic Dice

There are 5 sheets with four dice on each sheet. That leaves 2 extra dice, which can be used when needed. Teammates cut out the dice along the lines and then fold them into cubes. See assembly steps below. Then students distribute the dice so that each team ends up with 1 Symbolic Die and 1 Concrete Die.



Fraction Dice Assembly Instructions

In Steps 1-6, fold as pictured below. In Step 7, fold the tab into the die. To produce durable Fraction Dice, secure the folded die with a piece of tape.

