

# DI: Differentiated Instruction: Enhancing Teaching & Learning

Differentiated Instruction (DI) is one of the most powerful and widely accepted approaches to enhancing the teaching and learning environment. This reference guide is designed to increase educators' understanding of DI and provide practical tools and strategies for its implementation in the classroom.

## What is DI?

DI is an approach that empowers both the teacher and the learner. It effectively addresses the needs of a wide range of learners by providing multiple pathways in the teaching and learning process.

DI builds upon a solid core curriculum that reflects relevant standards. Data from formative and summative assessments is used to identify learners' abilities, readiness and interests. Additionally, this data informs teacher decision-making and leads to carefully crafted instruction and adjustment of the curriculum.

It is a comprehensive and flexible process that includes the planning, preparation and delivery of instruction to address the diversity of students' learning needs within the classroom. Through DI, teachers take into account who they teach, what they teach, where they teach and how they teach.

- Prior knowledge must be recognised
- Students must be actively involved in the learning process
- Students require emotionally and physically safe environments

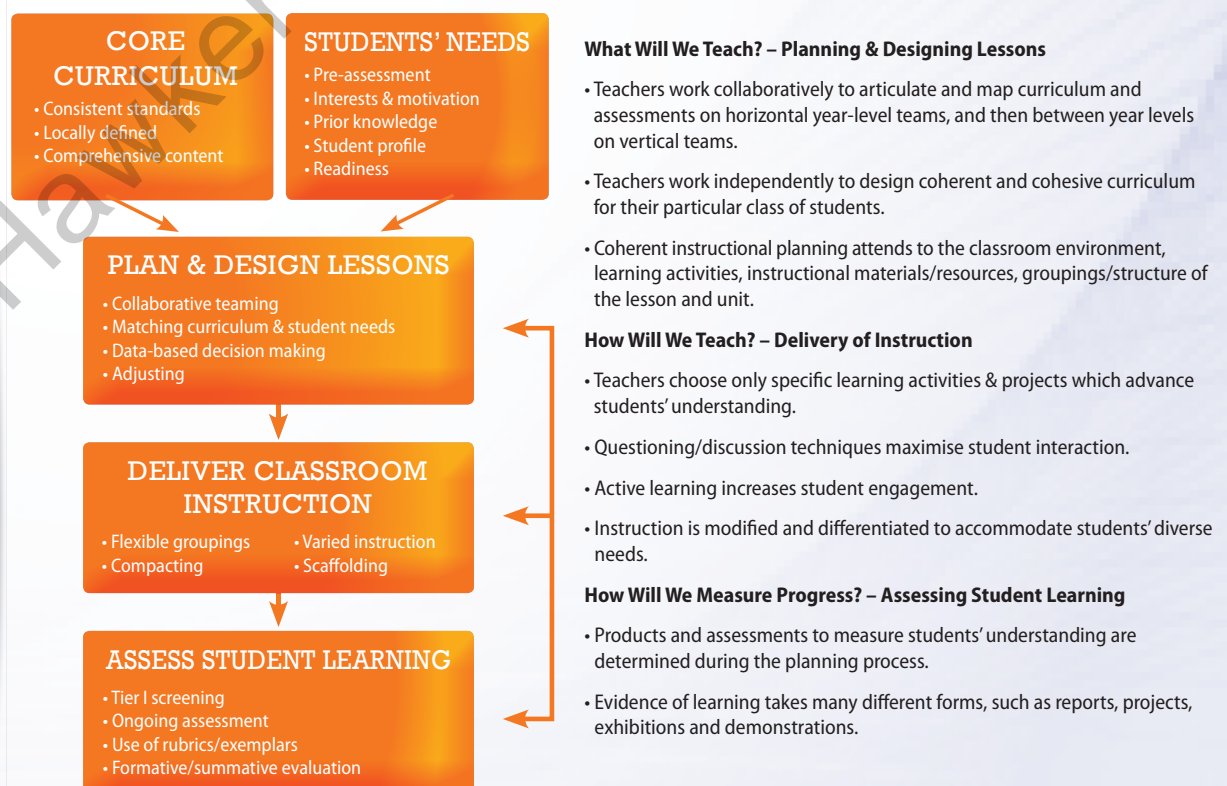
## Key Features

- Maximises student-centred instruction and activities
- Includes recognition of student diversity
- Provides choice for both students and teachers
- Incorporates collaboration/teaming
- Utilises flexible, ad hoc groupings
- Plans instruction with learning centres/stations
- Measures progress through ongoing assessment
- Uses multiple data for decision making
- Features teachers as facilitators of learning
- Maximises each student's opportunity for success
- Integrates technology for both instruction and assessment
- Implements research-based brain compatible strategies
- Provides appropriately challenging learning environments

## Guiding Principles

- All children can learn; intelligence is not fixed
- Children have differing talents, abilities and interests
- Children learn through multiple pathways

## Understanding DI



by Helene M. Hanson