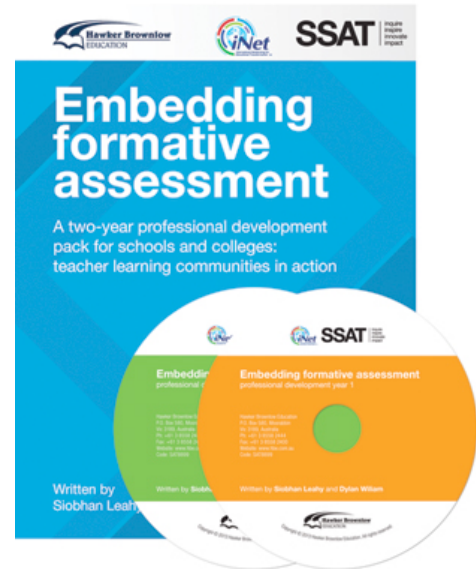


Embedding Formative Assessment Professional Development Pack

Author(s): Siobhan Leahy and Dylan William

Date Available: 24 September 2013
ISBN: 978 1 74330 889 9
Code/SKU: SAT8899
RRP: \$495.00 +GST
Format/Page No.: DVD – 2 discs
Age Group: P–12, Professional
Development
Topic: Activities & Exercises,
Assessment, Leadership,
PLC
Learning Area: Cross-curricular



Summary:

Written by Professor Dylan William and Siobhan Leahy, *Embedding Formative Assessment* is a two-year professional development pack for schools and colleges that contains all the materials needed for two years of research-based professional development. This pack is based on the premise that all teachers can improve their practice by developing their use of assessment for learning (AfL) through membership of a teacher learning community (TLC).

Embedding Formative Assessment contains resources including handouts and case study films along with materials for 18 TLC meetings of 75 minutes each. Each workshop follows the same pattern and these are clearly outlined in the agenda for each TLC meeting. Core materials include agendas for leaders of TLCs and participants, personal action plans, peer observation sheets, student surveys and more. They are provided both in PDF and as a Word document to allow for schools to adapt to their own context.

The *Embedding Formative Assessment* pack provides an excellent opportunity for schools in their assessment for learning journey. It presents educators with both the challenge and the support needed to embed formative assessment teaching practices consistently across a whole school.

Supporting Resources:

- *Content, Then Process: Teacher Learning Communities in the Service of Formative Assessment* (SOT2446)
- *Ahead of the Curve: The Power of Assessment to Transform*
- *Teaching & Learning* (SOT8281)
- *Formative Assessments in a Professional Learning Community* (EYE9928)
- *Leading the Way to Assessment for Learning: A Practical Guide, Second Edition* (SOT5256)
- *Seven Strategies of Assessment for Learning* (ETS0598)

**Hawker Brownlow**
EDUCATION
PO Box 580
Moorabbin VIC 3189
Tel: +61 3 8558 2444
Fax: +61 3 8558 2400
Web: www.hbe.com.au
Email: orders@hbe.com.au